



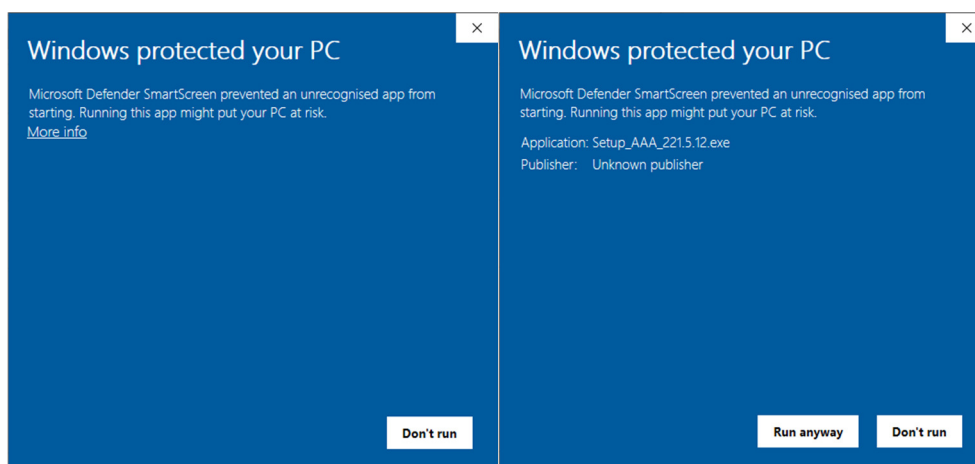
# Install AAA and drivers

## Installing Articulate Assistant Advanced™ Software

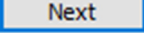
1. Download the latest revision of AAA from <http://www.articulateinstruments.com/downloads/> or install from the USB drive provided with the USB licence key.

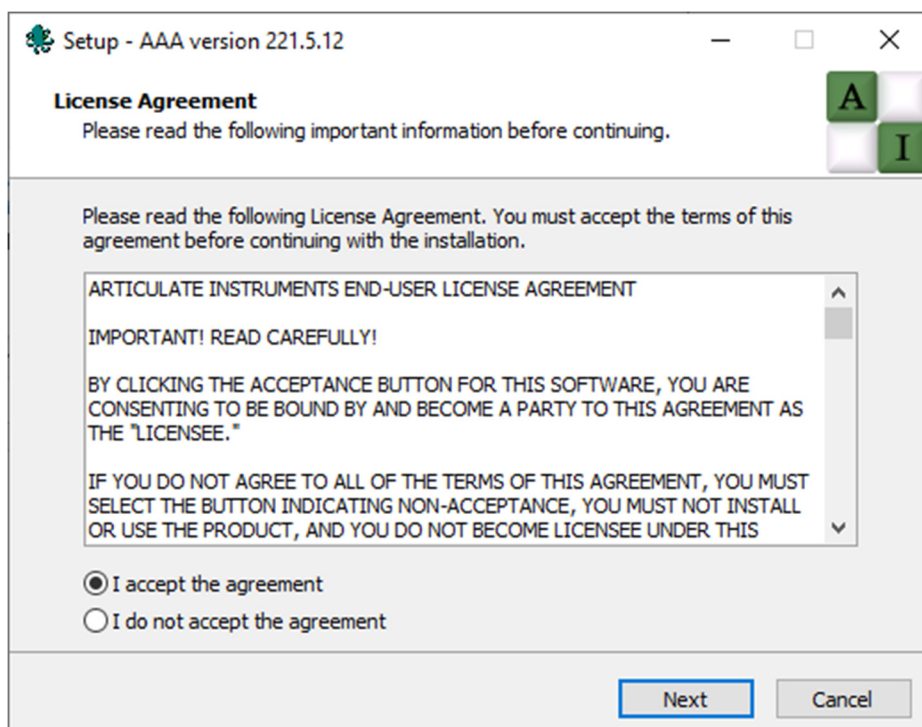
2. Right-click  on the 'Setup\_AAA\_<version>.exe' installer and run as administrator  . Run as administrator is only required the first time AAA is installed.

3. This screen may appear. Click More info then 'Run anyway'.

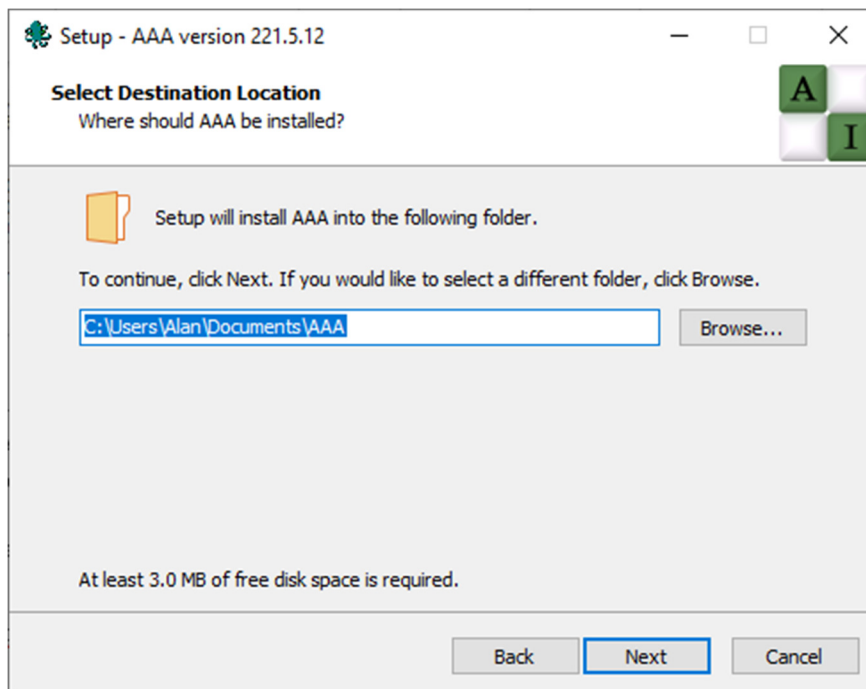


Then allow the app to make changes to your computer

4. Read the agreement. Then accept the agreement and click .

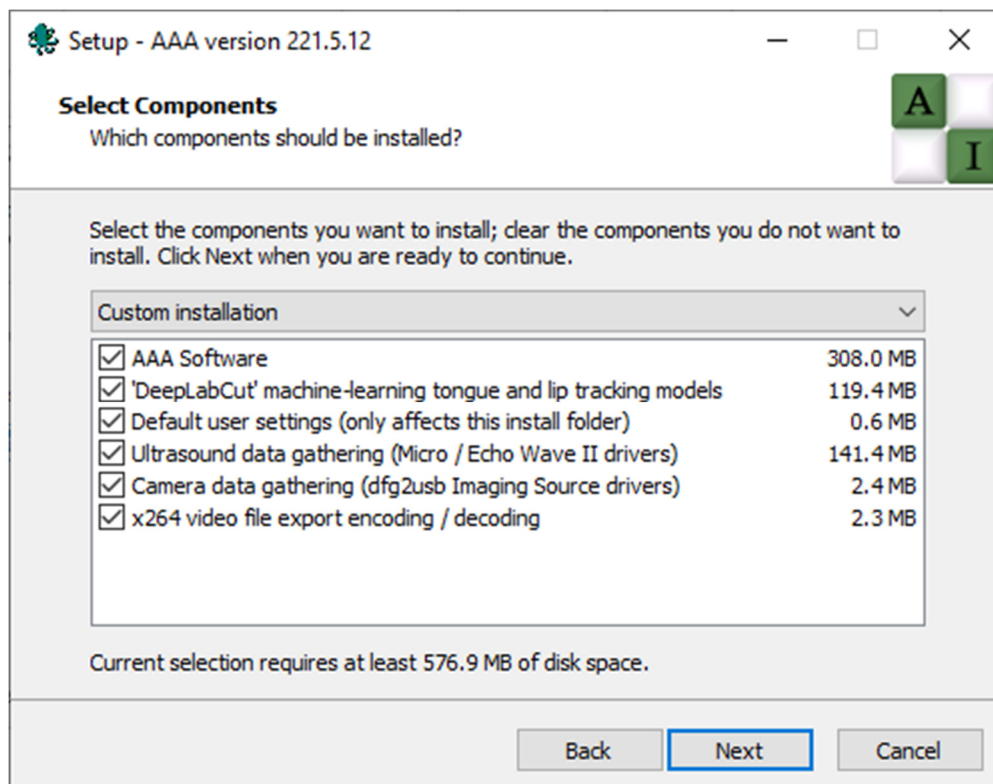


5. Newer versions of AAA (221\_3 onwards) install the app into the user's documents folder. This avoids folder permission problems where the user does not have full administrator rights. In all versions it is possible to choose a different application folder. Click **Next**.

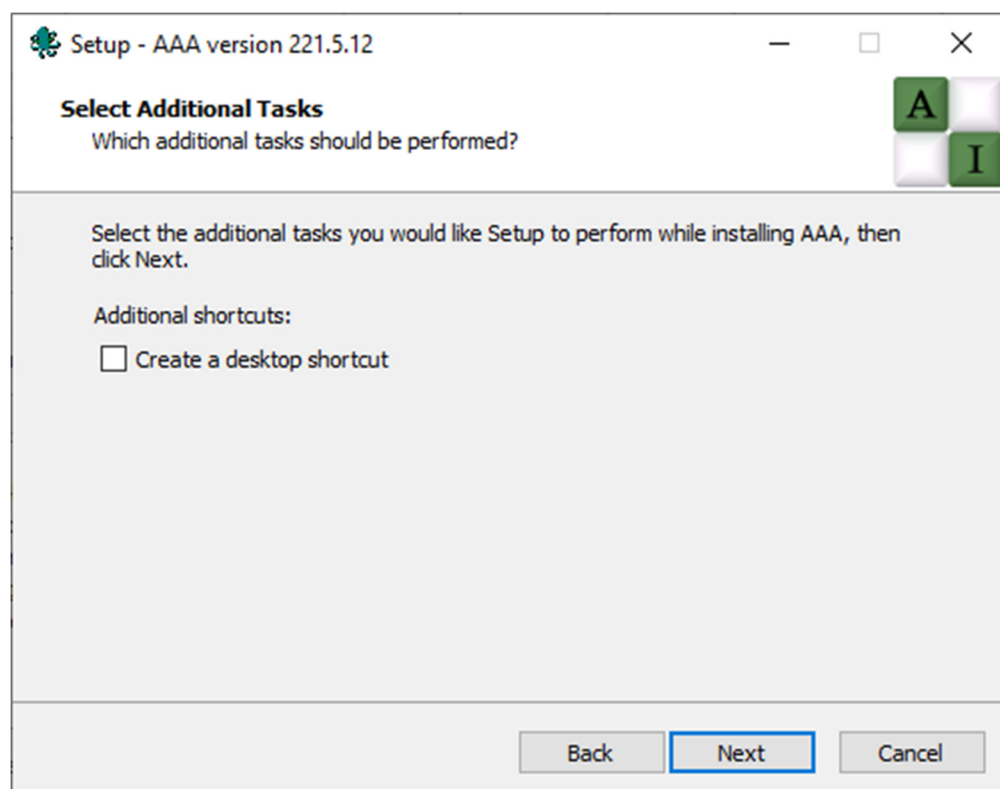


The program can be run from the Windows Taskbar Start Menu ('**Start:Programs:ArticAsst:AAA**') or a desktop icon.

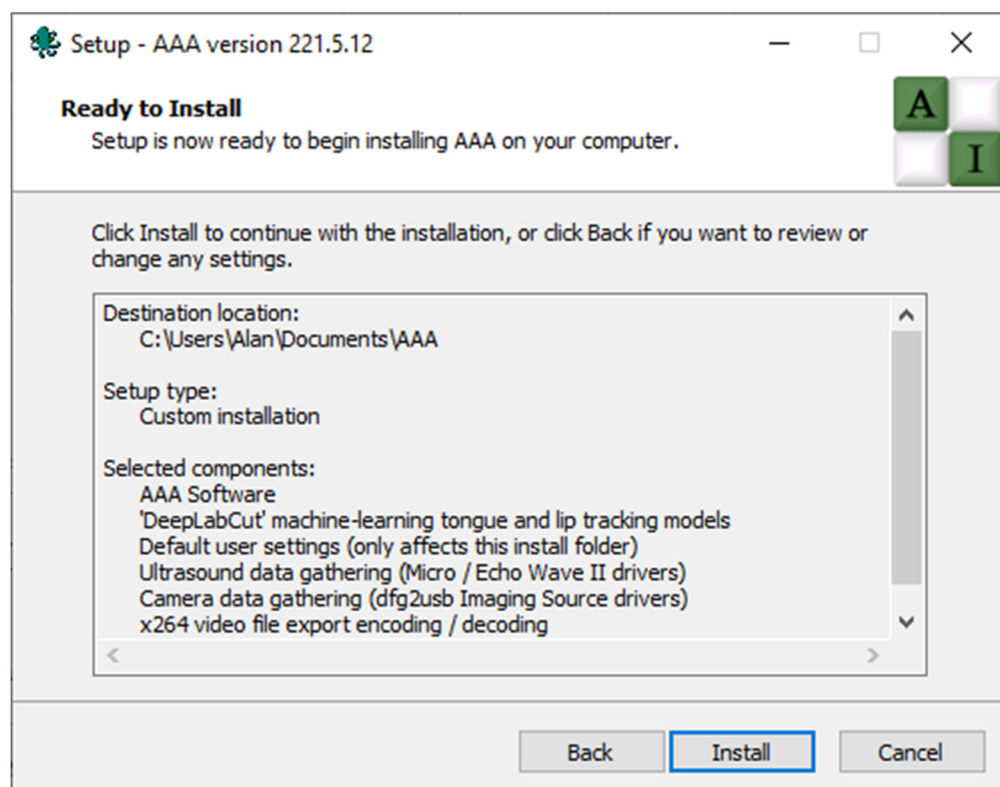
6. The components to be installed should be left checked. Click **Next**.

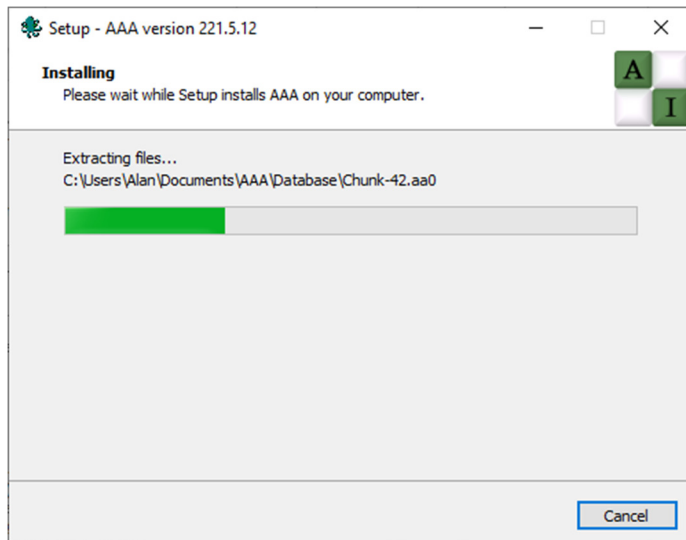


7. Choose whether to have a desktop shortcut. Click **Next**.



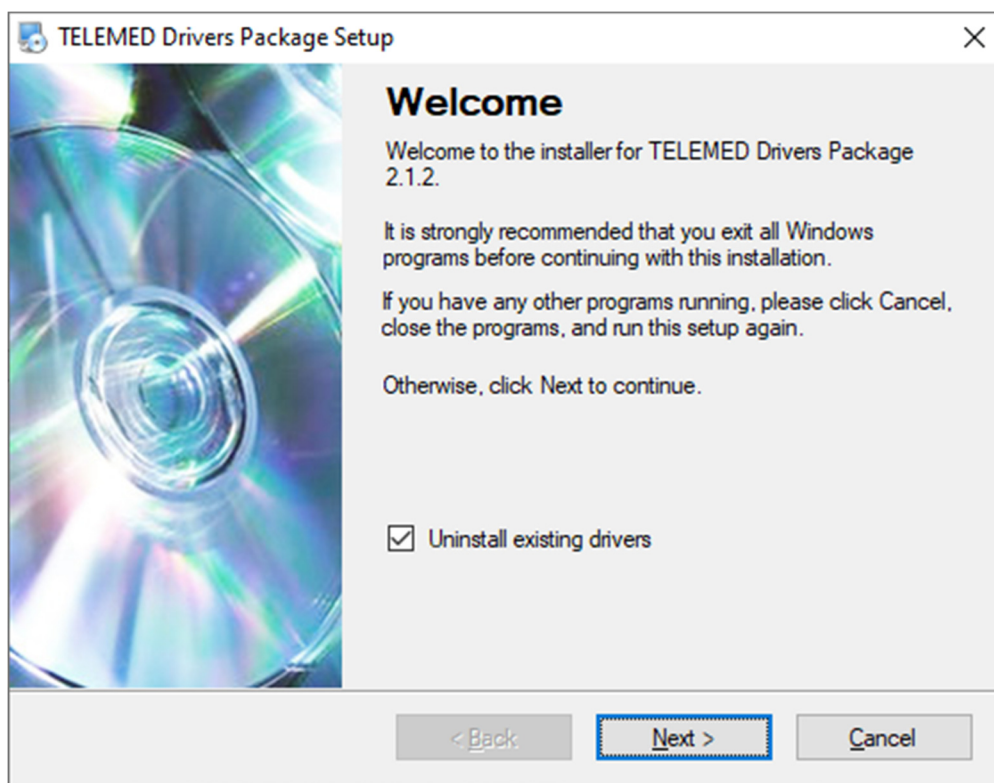
8. Click **Install**. The files will be extracted





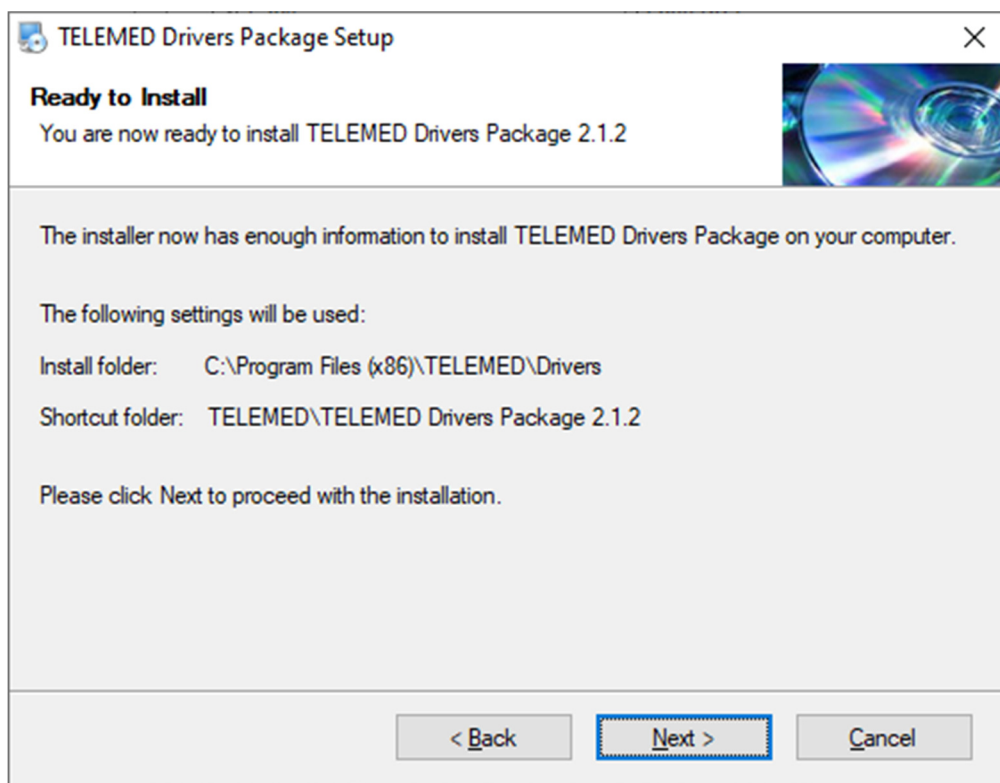
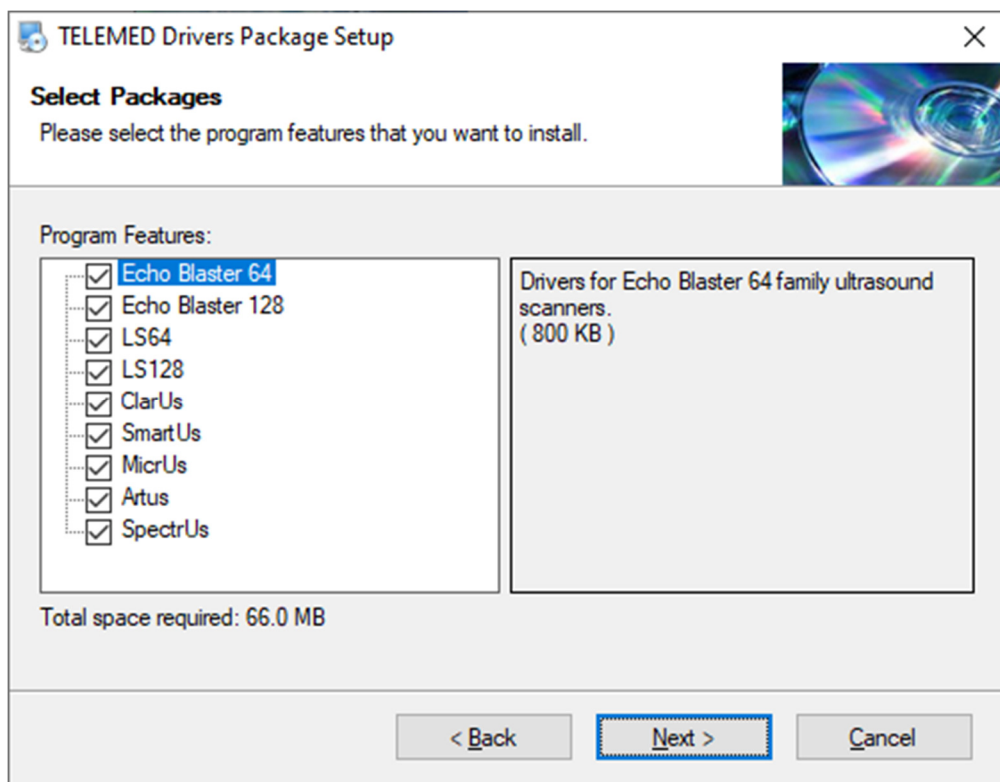
### Telemed drivers (32-bit version) installation.

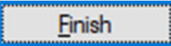
Telemed drivers will be installed automatically as part of the AAA installation. Click **Next**. DO NOT close programs and run again.

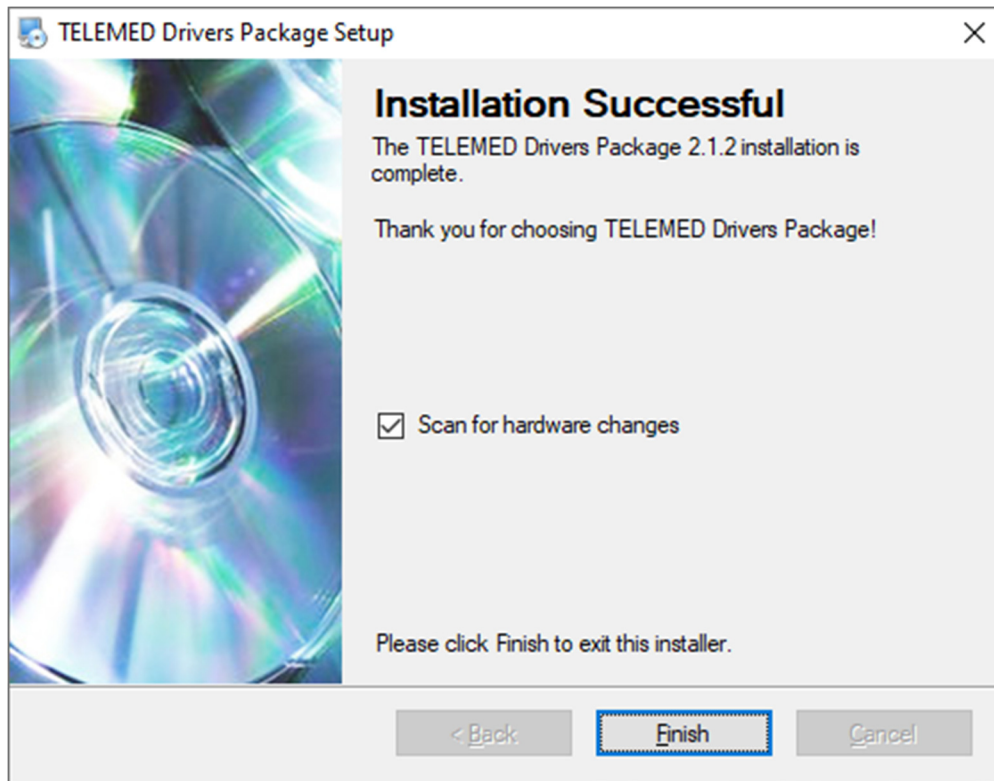


Click **Next**. Optionally, to save a little time and space, uncheck all options except MicrUs and Echo Blaster 128





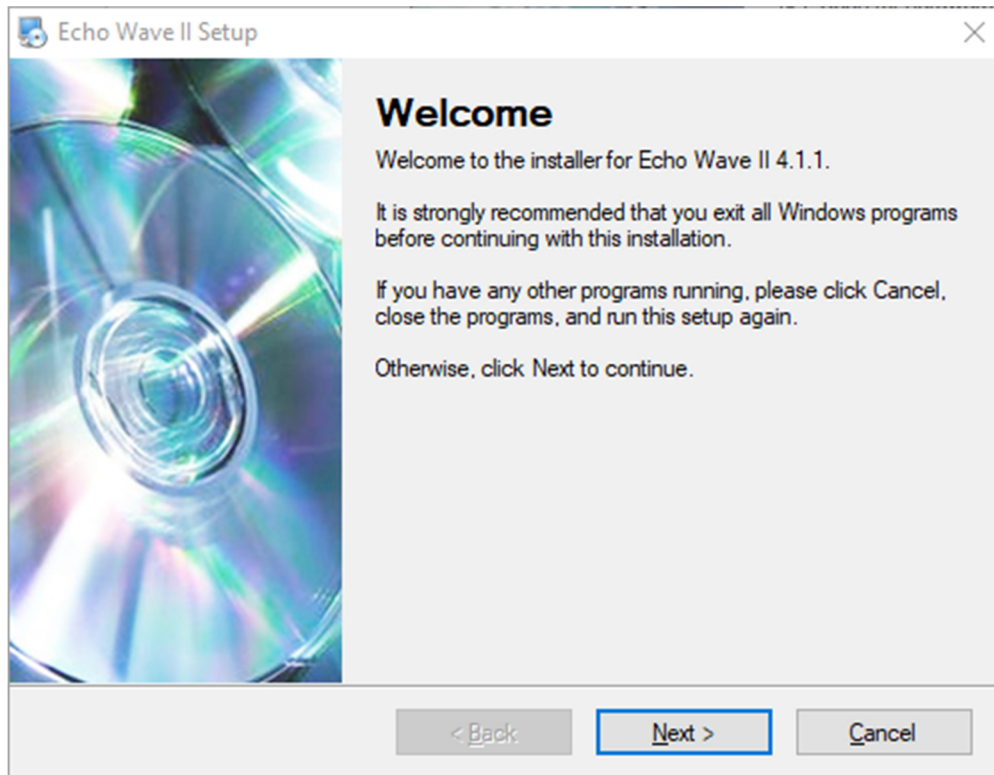
Click 



Echo Wave II software (32-bit version) installation.

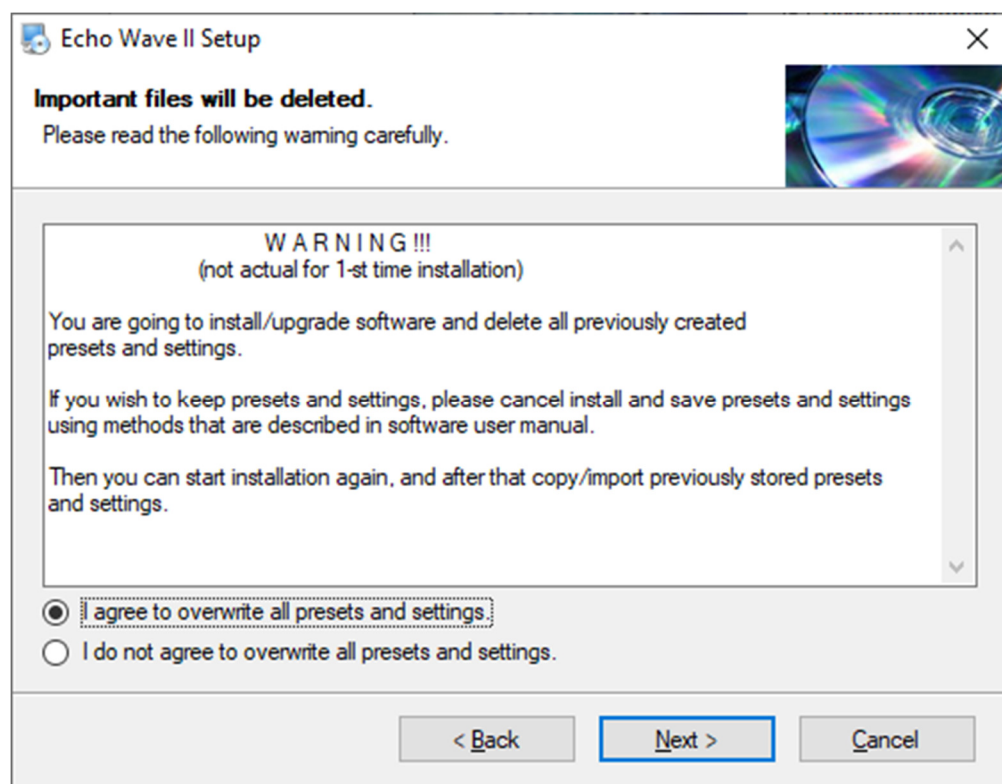
Echo Wave II will be installed automatically as part of the AAA installation. Click

Next



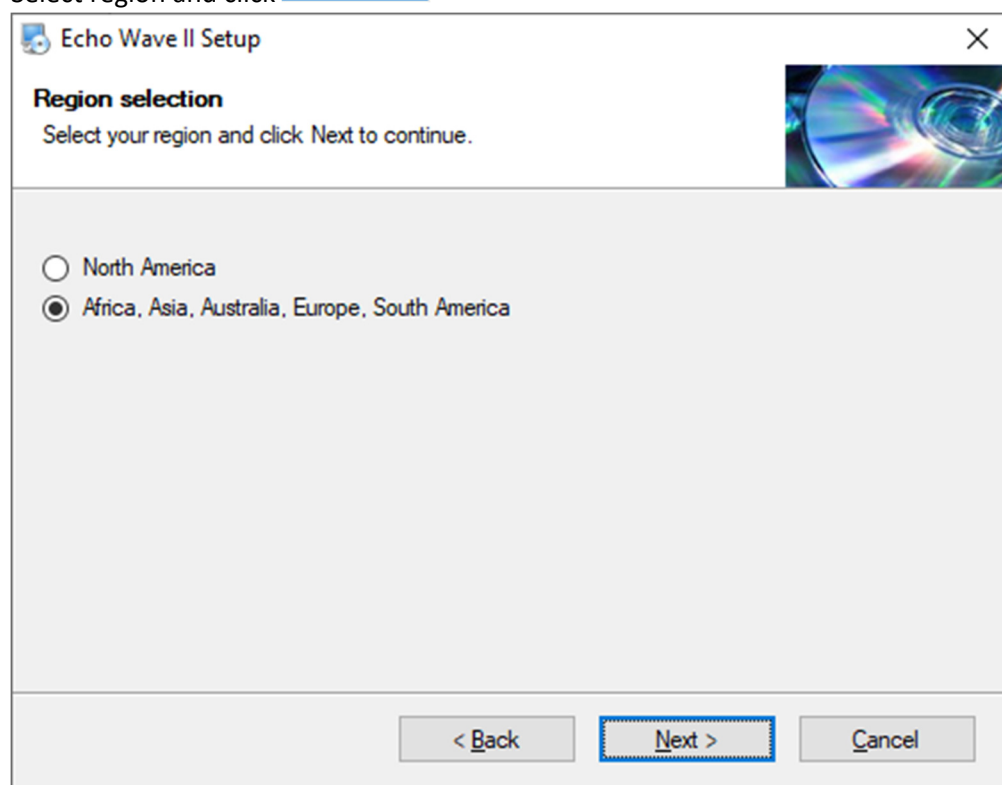
Select I agree to overwrite all presets and settings and click

Next



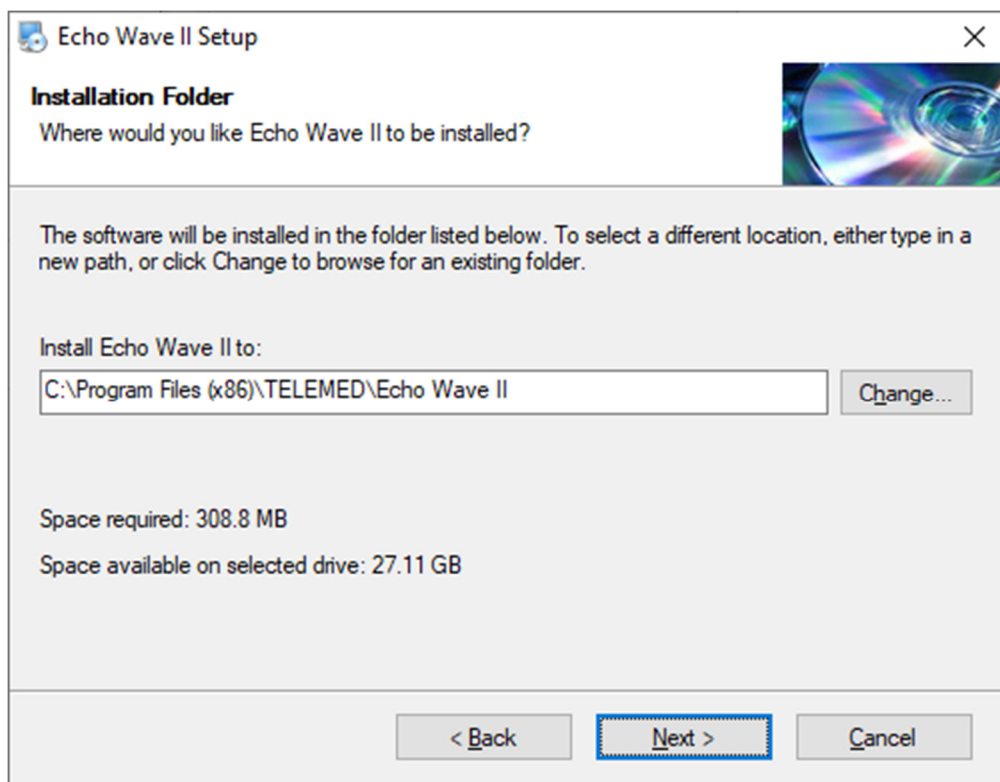
Select region and click

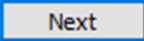
Next

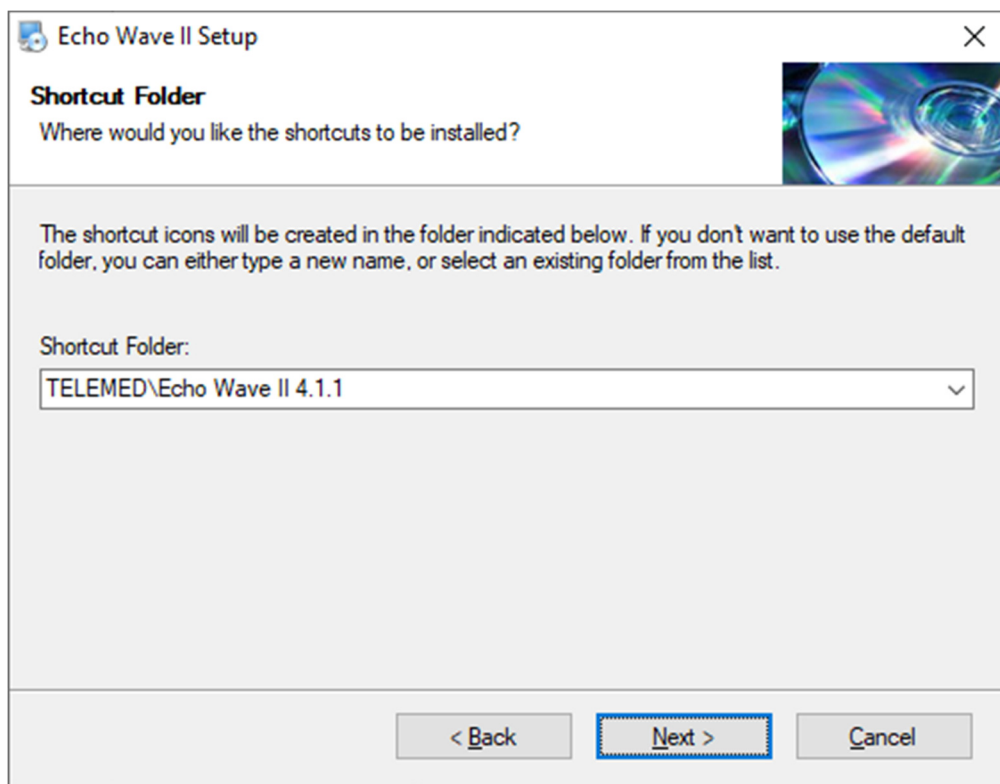


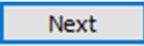
Click

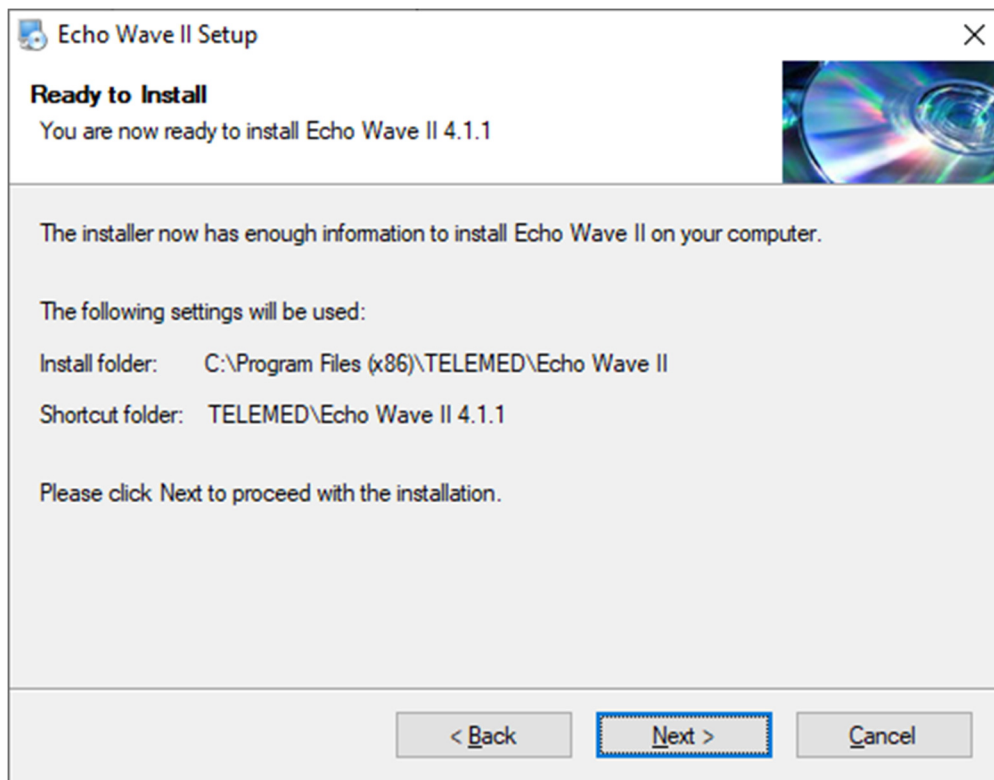
Next



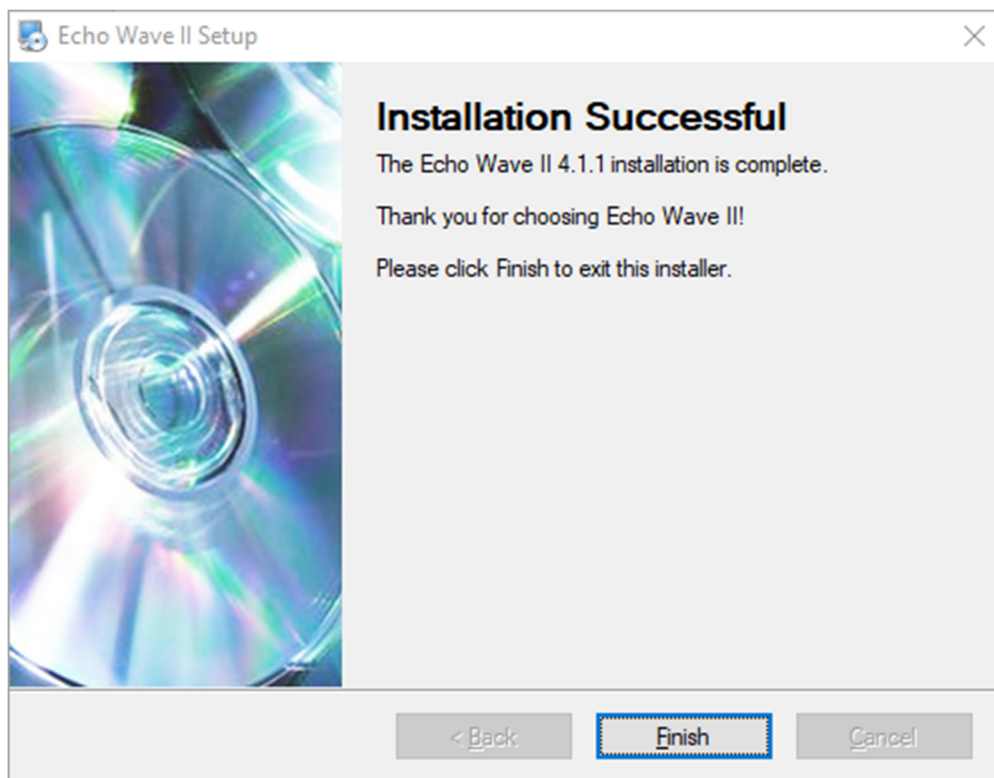
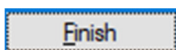
Click 



Click 



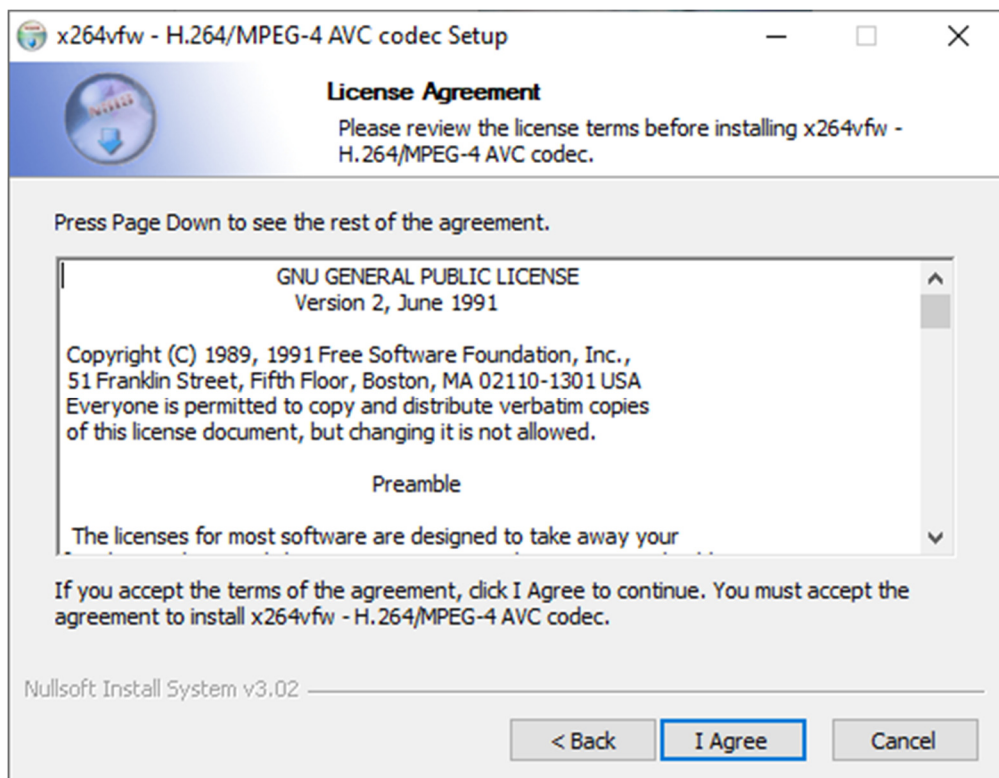
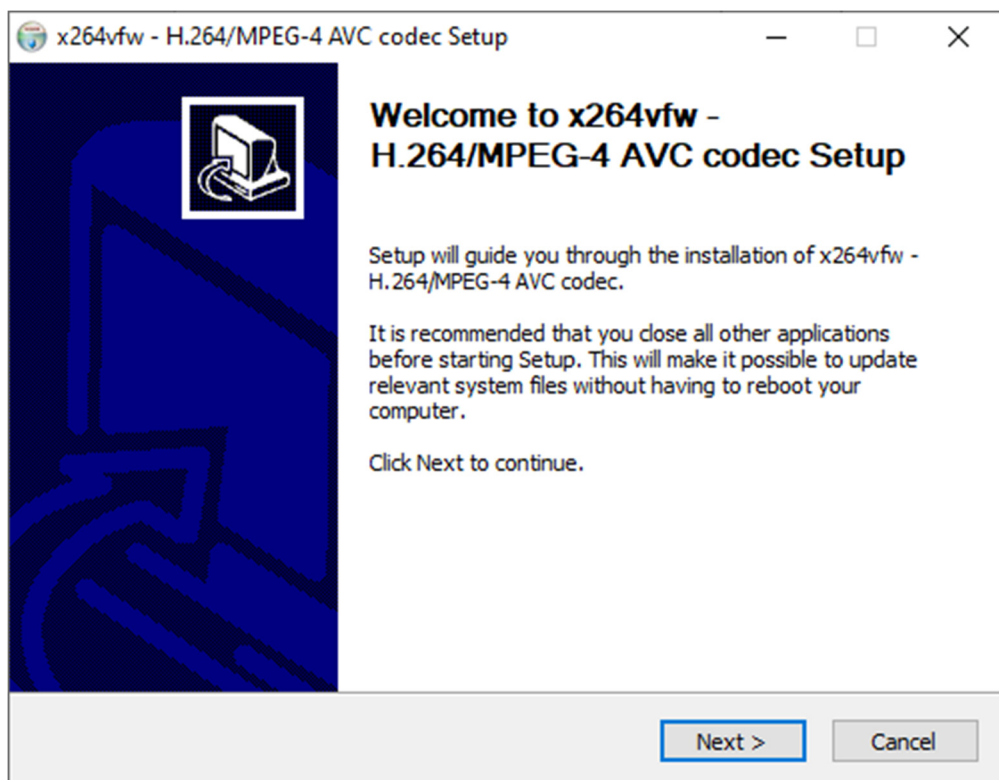
Click



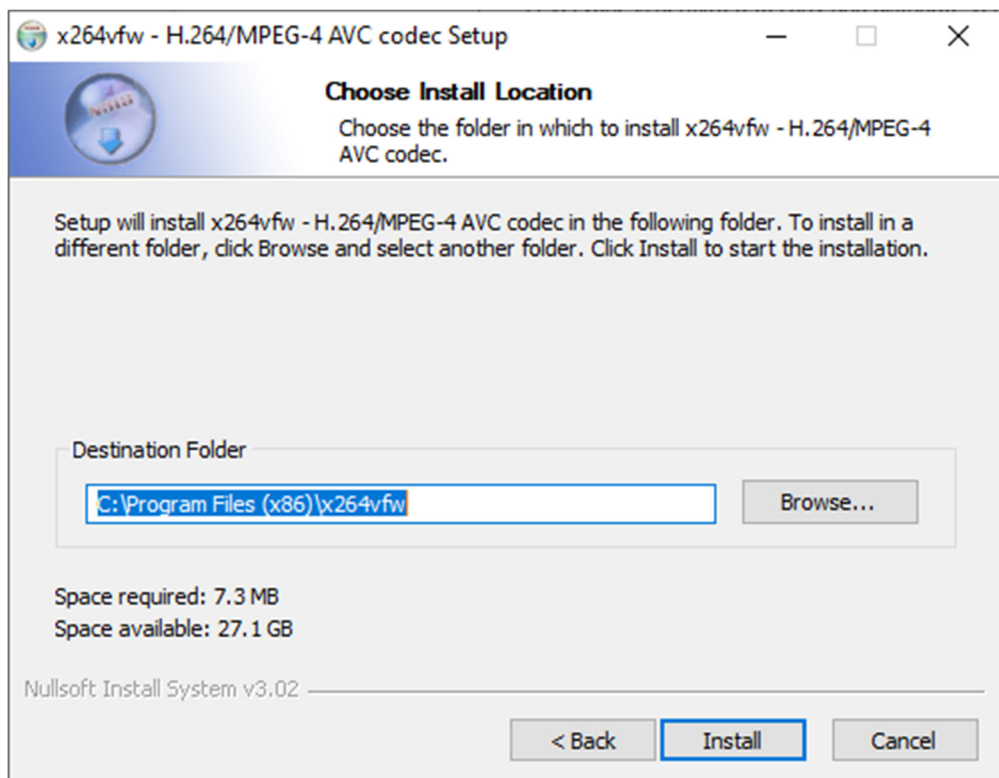
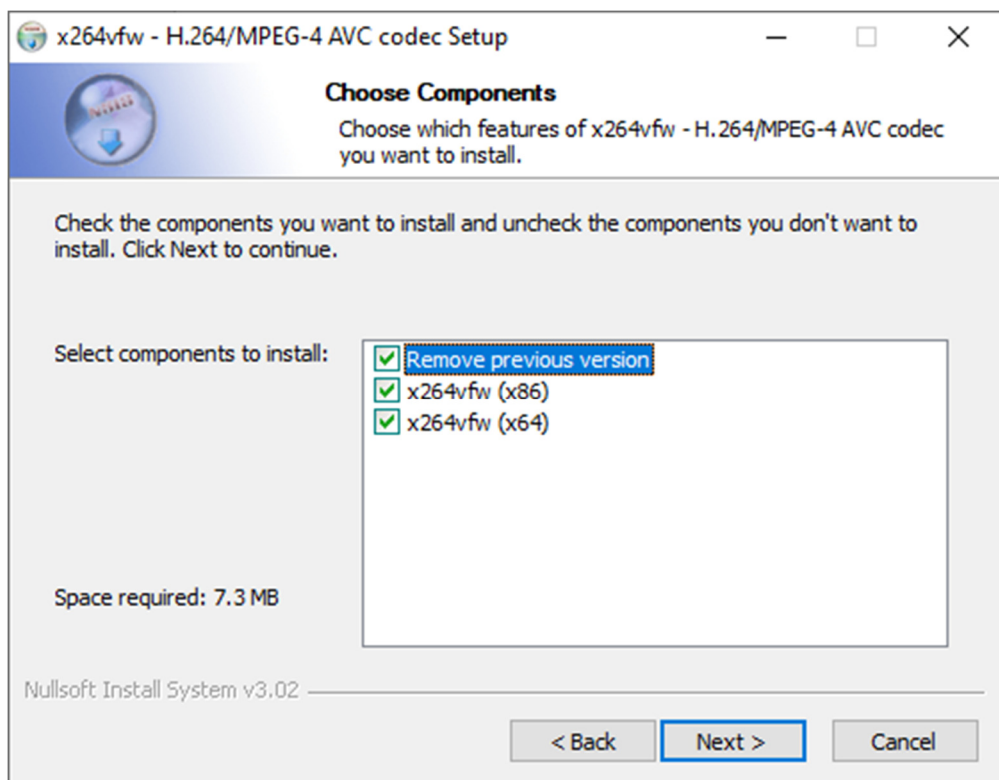
## H.264 image codec installation

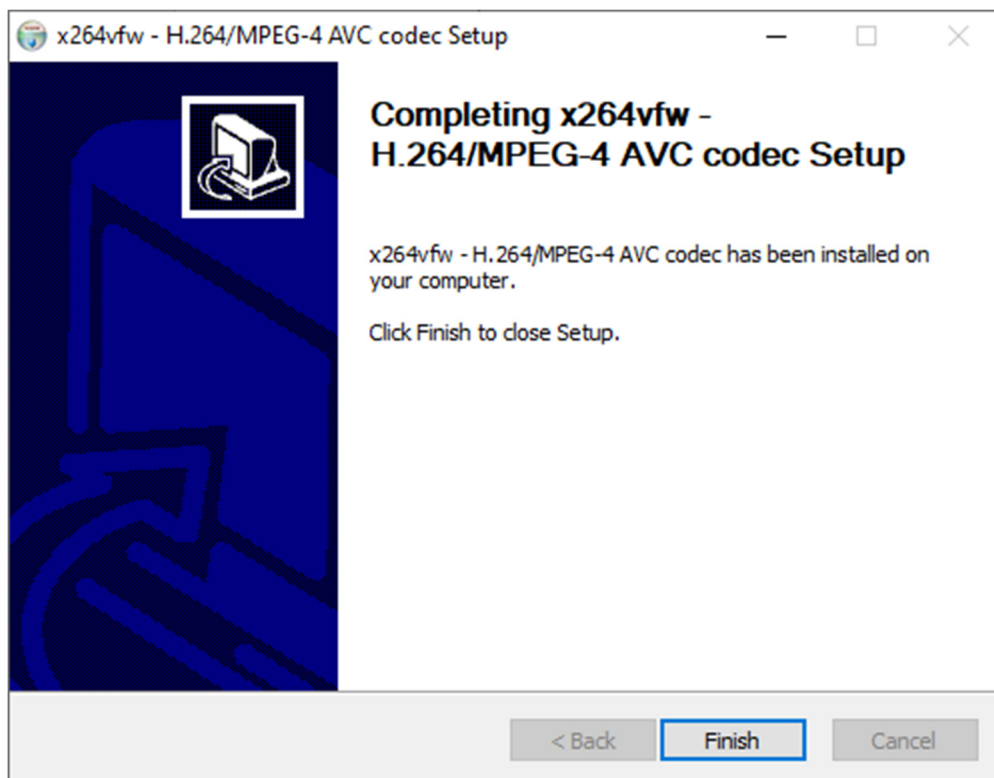
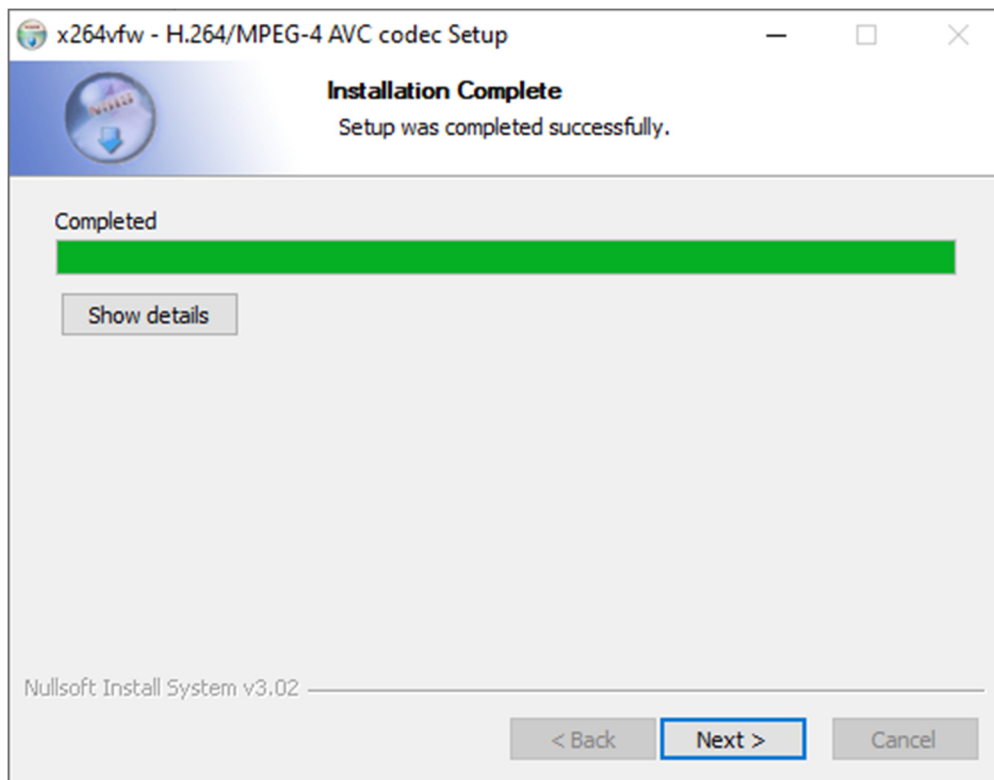
This codec saves space when exporting videos from AAA





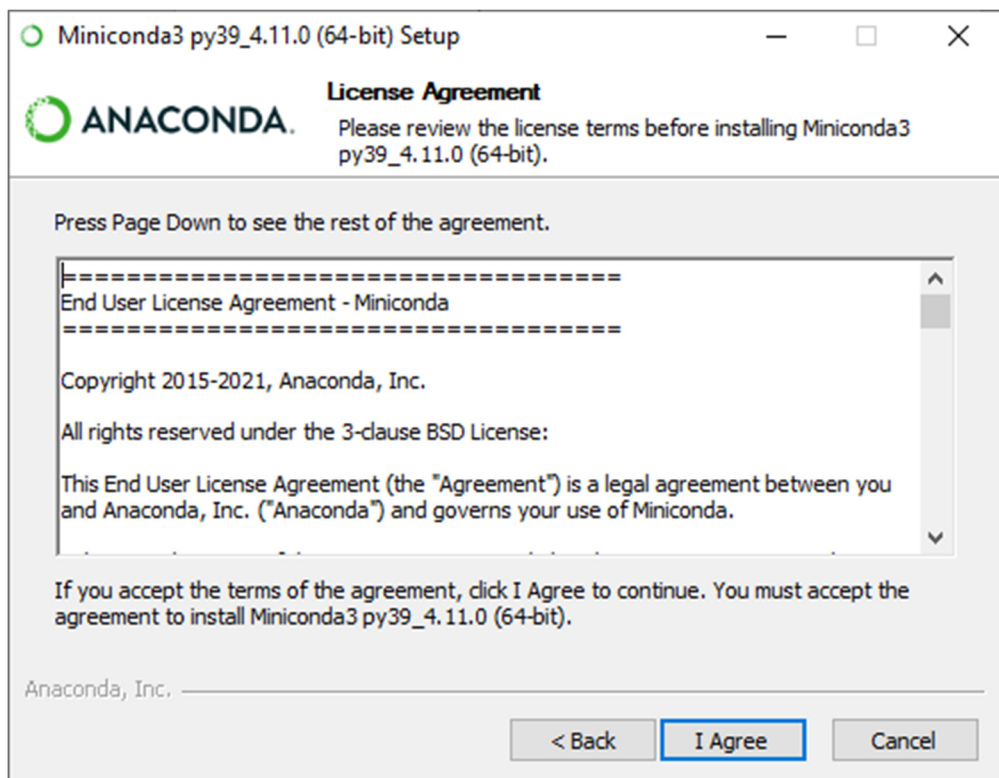
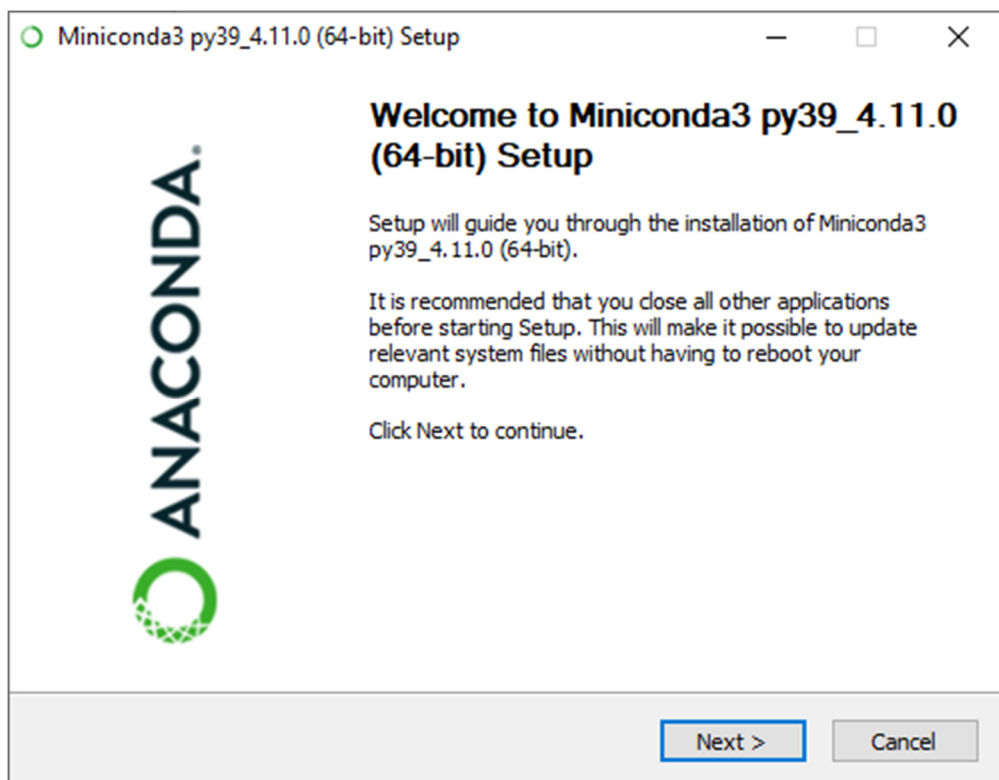


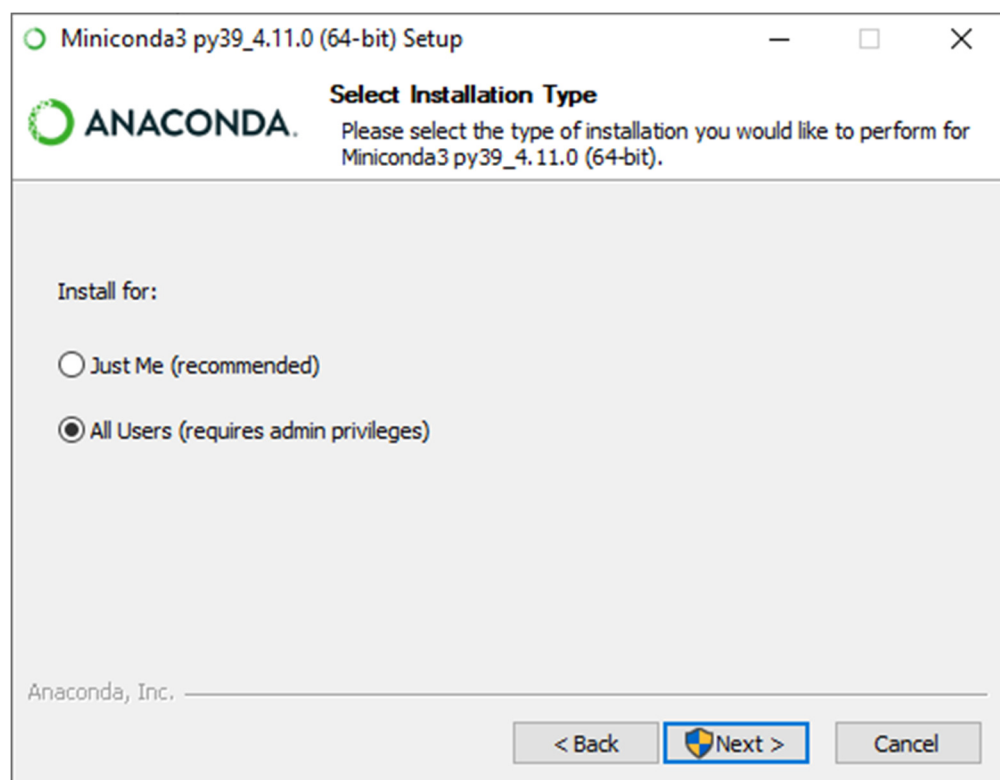




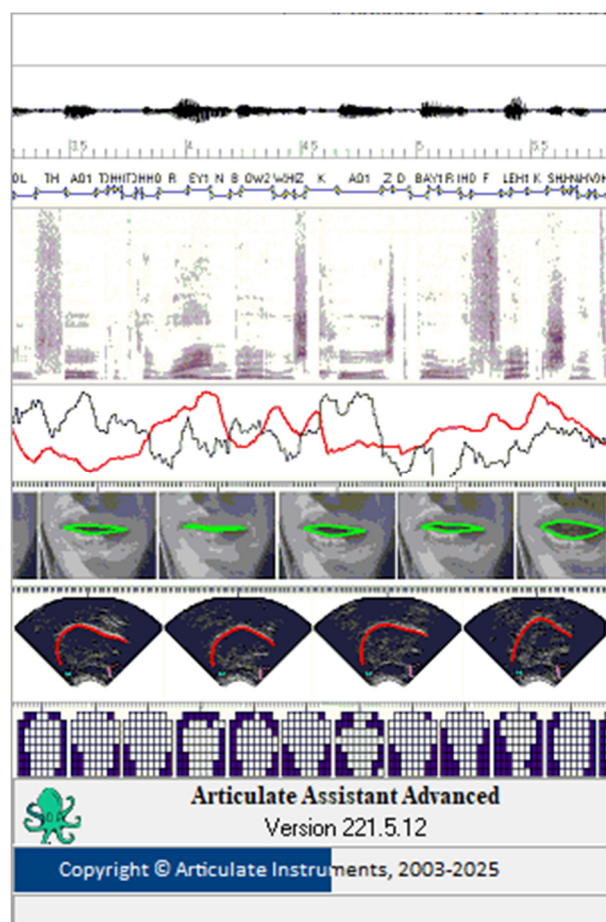
## Miniconda installation

This should only be done once. The first time AAA is installed.

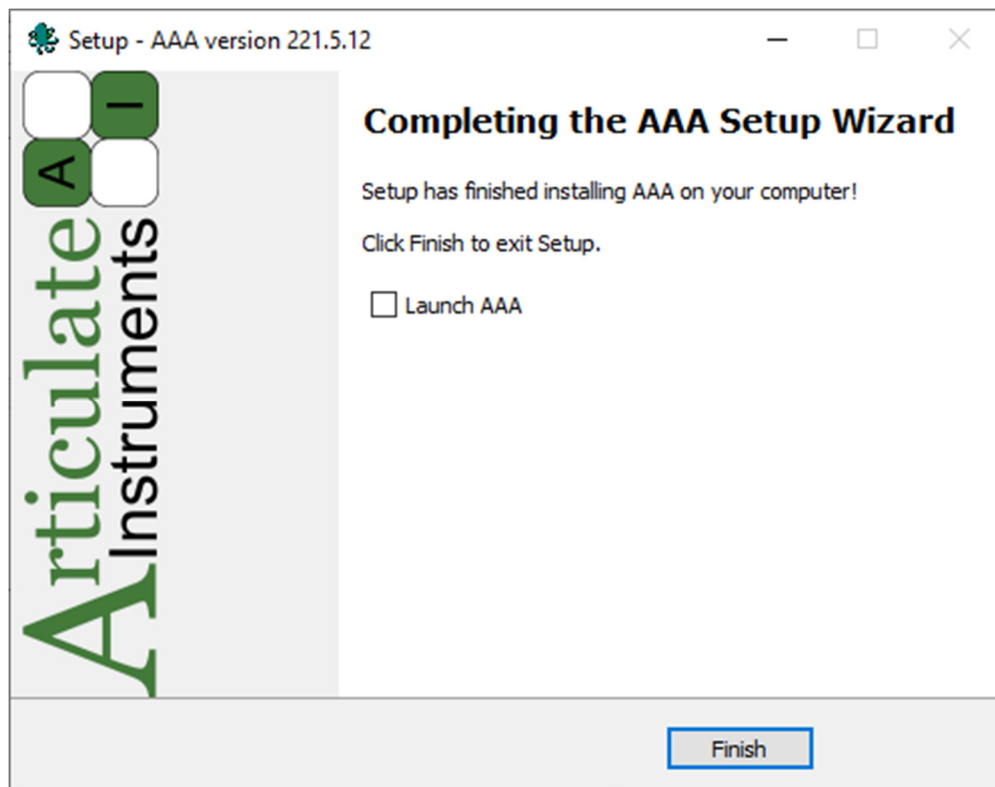




AAA will then automatically run and install deeplabcut





Installation will then be complete



## Initialising Telemed ultrasound

It is necessary to run Echo Wave II once as administrator after the system is installed for the first time. This initialises a number of settings.

1. Connect the Telemed probe to the scanner and the scanner to the PC via USB.
2. Right-click  on C:\Program Files (x86)\TELEMED\Echo Wave II\EchoWave.exe and run as administrator  Run as administrator
3. Close Echo Wave II.

## Installing DFG2USB driver.

To install the driver for the Imaging Source video capture card, the DFG2USB unit must be connected via USB to the PC.

## Installing Focusrite Scarlett pre-amp/soundcard drivers

Focusrite update their models every couple of years. Each new model is given a generation ID (Gen2, Gen3, Gen4 etc). Each model has unique drivers and care must be taken to install the driver that matches your model.

Articulate instruments supplies Focusrite Scarlett Solo and Scarlett 4i4 models. The following pictures show the appearance of each model and the location of the driver.

Match the image below to your Focusrite Scarlett and download and install the corresponding driver.



<https://downloads.focusrite.com/focusrite/scarlett-2nd-gen/scarlett-solo-2nd-gen>



Focusrite Scarlett Solo Gen2 <https://downloads.focusrite.com/focusrite/scarlett-2nd-gen/scarlett-solo-2nd-gen>



Focusrite Scarlett Solo Gen3 <https://downloads.focusrite.com/focusrite/scarlett-3rd-gen/scarlett-solo-3rd-gen>





Focusrite Scarlett Solo Gen4 <https://downloads.focusrite.com/focusrite/scarlett-4th-gen/scarlett-solo-4th-gen>



Focusrite Scarlett 4i4 Gen3 <https://downloads.focusrite.com/focusrite/scarlett-3rd-gen/scarlett-4i4-3rd-gen>





FocusriteScarlett 4i4 Gen4 <https://downloads.focusrite.com/focusrite/scarlett-4th-gen/scarlett-4i4-4th-gen>

## Enabling the AAA app with the USB licence key

Articulate Assistant Advanced requires a USB licence key plugged into the usb port of the PC in order for the software to function fully. Without the licence key it is not possible to record or import data nor view data that has been previously recorded.

A USB key embodies each issued licence. Red licence keys, issued from 2003-2025, are now obsolete. Red AAA dongles require a driver to be installed and Windows Core Isolation Memory Integrity blocks this driver. If you are having problems with your licence key, please check if a Windows update has turned ON Core Isolation Memory Integrity. To do this, please use your Windows Start menu to search for “Core Isolation”, then in that settings page please ensure that Memory Integrity is disabled.

Since August 2025 we have issued green usb licence keys which do not require dedicated drivers. If you wish to replace your red dongle with a green one then you will need to return the red dongle to us or show photographic evidence that the red dongle has been destroyed. We will then ship a green dongle to you at a cost of £30 +shipping + import customs charges (payable to courier).




**IMPORTANT:** Keep your USB key safe when not in use. **It is valuable.**

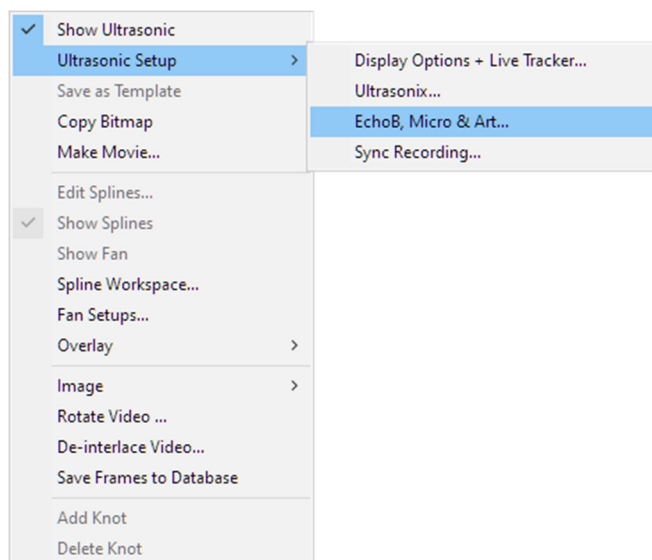
Note: The red USB license key should be plugged in AFTER Articulate Assistant Advanced has been installed because the installation process sets up the USB key drivers. If the USB key is plugged in before Articulate Assistant Advanced is installed then windows will detect a new device and ask for the drivers.

## Recording video sync signal and ultrasonic pulses on the same channel Focusrite Scarlett Solo

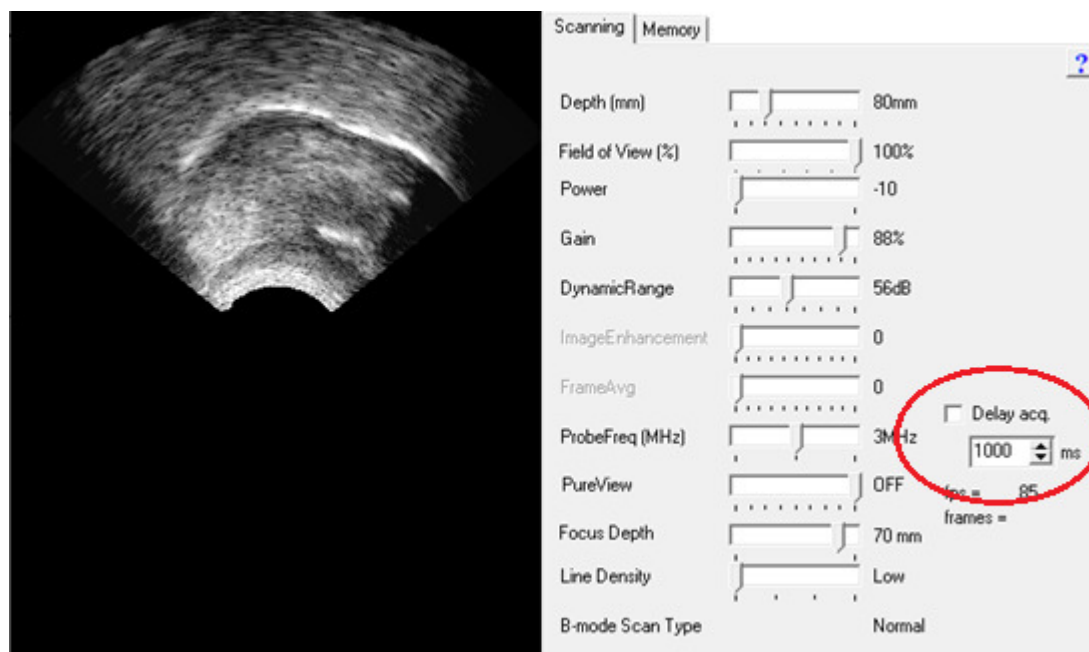
When recording the video sync signal and ultrasonic frame sync pulses on the same channel, it is necessary to delay the start of the ultrasonic recording to ensure separation. It is also necessary to set the automatic ultrasonic synchronisation so that it ignores the video sync signal.

Follow these steps:


1. Right-click  on the ultrasound display and select “ultrasonic setup... -> Micro, Echob & Art”

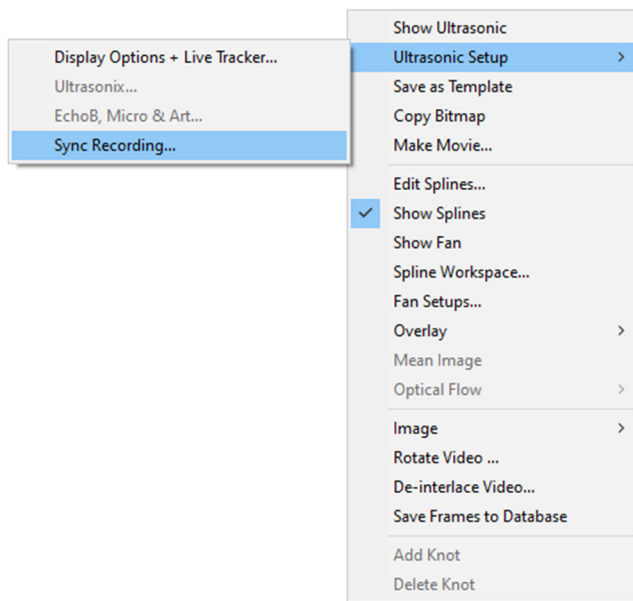


2. This opens the ultrasonic settings dialog. Check the box Delay acq. And set to 1000ms. This will delay the start of ultrasound recording for one second.



3. Close the dialog

4. Right-click  on the ultrasound display and select “ultrasonic setup... -> Micro, EchoB & Art”



5. In the sync ultrasonic dialog, make sure the channel is set to the Focusrite Scarlett channel with the ultrasonic pulses.
6. Set ignore the first 800 milliseconds of the sync signal

