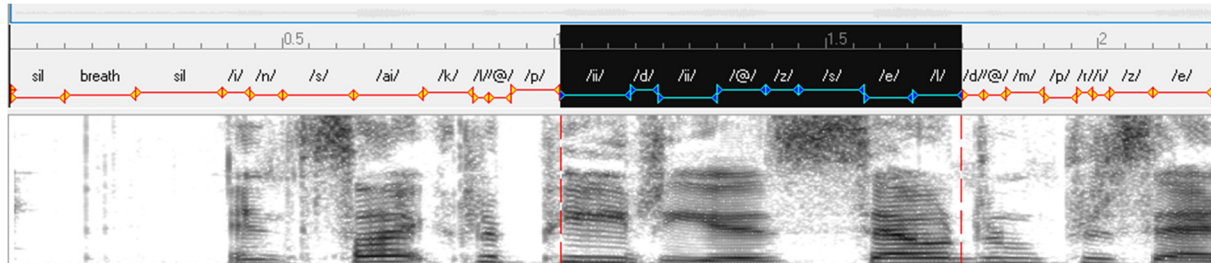
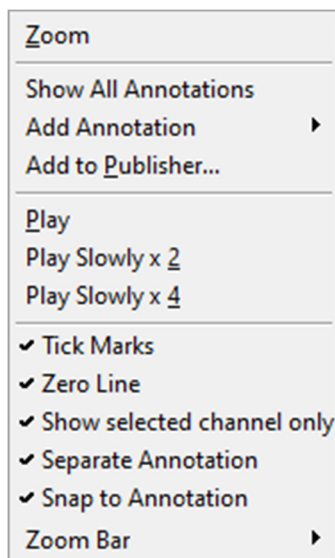


Annotation adjustment in the Wave subwindow

Annotation labels are displayed in the Wave subwindow. Annotations can be added from this window, their positions can be shifted in time or adjusted in duration.



Right-click Popup menu options



Show all annotations – sets filter to 'current client', 'current recording' and 'all annotations'.

Add annotation – allows selection from annotation hotlist (see Annotation Dialog tutorial) or a new annotation.

Separate Annotation – Separates the waveform from the annotations.

Snap-to-annotation – On by default so that when selecting a region it will jump to the start or end of an existing annotation if clicked close to it. This is useful to ensure continuous segment labelling but can be unwanted under some conditions so it can be switched off.

Here are some keyboard based shortcuts.

Create an annotation <ctrl>-T - Select a region in the audio timeline and press Ctrl-T to create an annotation there. The new annotation starts with its title text selected so you can just start typing immediately to replace the title with what you type.

Adjusting one end of an annotation – Hold the <ctrl> key down and click on the end of the start or end of the annotation you want to adjust.

Moving an annotation – Hold the <ctrl> and <shift> keys and click and drag the annotation.

Selecting more than one annotation - Clicking on an annotation in the audio timeline selects just that annotation. Clicking and dragging in the audio timeline across multiple annotations selects all of them in the annotation dialog list. Holding Shift key and clicking annotations in the audio timeline adds them to the current multiselection in the annotation list.

Resize more than one annotation - Selecting multiple annotations within the audio timeline and then holding the Ctrl key and click-dragging the edge of an annotation in the timeline re-sizes all selected annotations by the same proportion. You can use this to reverse the order of multiple annotations by selecting all of them and dragging one end of the selection past the other end.

Move more than one annotation - Selecting multiple annotations within the audio timeline and then holding Ctrl **and** Shift and click-dragging the selection in the timeline will move all selected annotations.