

The Annotation Dialog

Annotations are a powerful labelling tool built into the AAA database that allow users to select regions or points in time based on acoustic (e.g. segments), ultrasound (e.g. an articulatory transition region), or any other criterion. The labels can then be filtered to select specific subsets of labels and data at these times can be plotted within AAA (e.g. estimated tongue contours can be exported to the spline workspace). Alternatively, analysis values calculated in AAA can be exported to excel for further processing.

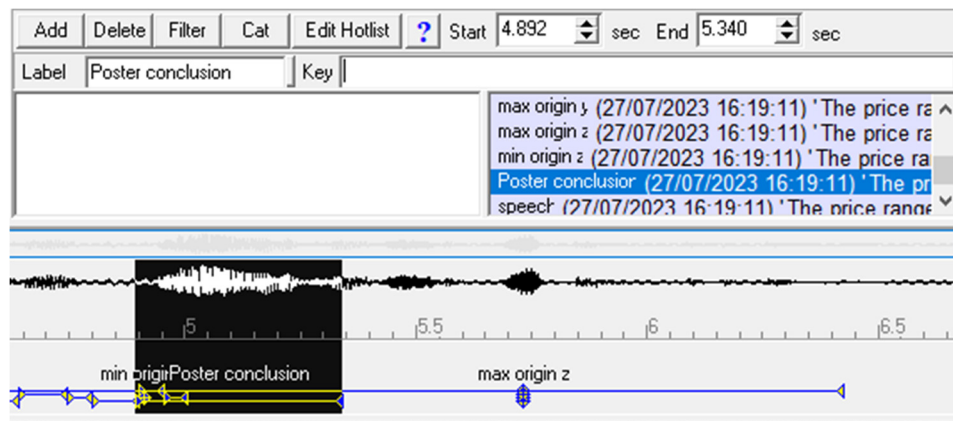
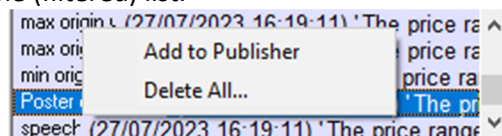


Figure 1 Annotation subwindow

Options

Add – Add an annotation. Select a region or time point in the waveform window and click **Add**. Then type in the name of the label in the label edit box. It will update automatically. Add any keywords or additional information in the Key Edit box (e.g. context segments and/or word position). A third white area on the left can be used for further notes or information.

Delete - Delete annotations multiselected in the annotation list box or delete all the filtered annotations shown in the annotation list box. Right-click on the annotation list box to get the option to delete all annotations in the (filtered) list.



Filter - Open Annotation filter dialog. It has a tab to select specific clients; a tab to select specific recordings; a tab to select specific annotations; and a tab to sort the annotation list entries. When a filter setting is selected there are standard logical operations that can be applied.

- Click on the ? to see the range of possible logical operations and what they do.
- 'Case' makes the filter pay attention to the case of the string e.g. 'Jam' matches 'James' but not 'james'.
- 'Whole' means that a string must be matched in full and not part of a longer string e.g. 'air' matches 'air' but not 'chair'.
- RegEx refers to regular expressions. This is an advanced option. Use this only if you know how to structure a regular expression. Google to find out the power of this filter option.



Figure 2 Annotation filter Client tab options

If your project contains more than one client then you can compare data across all clients or Family name. Other client parameters can be searched on if they have been entered for each client.

Figure 3 Annotation filter Recording tab options

You can filter based on

- the current client only or
- across all clients in the project.

Or filter which recordings based on

- words in the prompt
- or the name of the session which is by default the date but can be changed to anything e.g. baseline , pre-therapy, post therapy, followup.
- Or the date(s) of the recording

Filter

Client | Recording | Annotation | Sort

Filter

☒ Filter on Annotation ☐ All Annotations ?

Label RegExp Whole Case ?

Label contains

Notes RegExp Whole Case ?

Notes contains

Keywords RegExp Whole Case ?

Keywords contains

OK Cancel Load Save

Figure 4 Annotation filter Annotations tab options

Filtering the annotation can be based on the label.

Hint: When labelling phones it is a good idea to surround your label with a pair of forward slashes or other delimiter to stop it matching longer strings e.g.

If you have used the keywords box to enter context then you may wish to filter on that field also e.g. keyword = 'word final'

Filter

Client | Recording | Annotation | Sort

Sort

☐ Don't Sort

☐ Sort on Client

☒ Sort on Date-Time

☐ Sort on Label

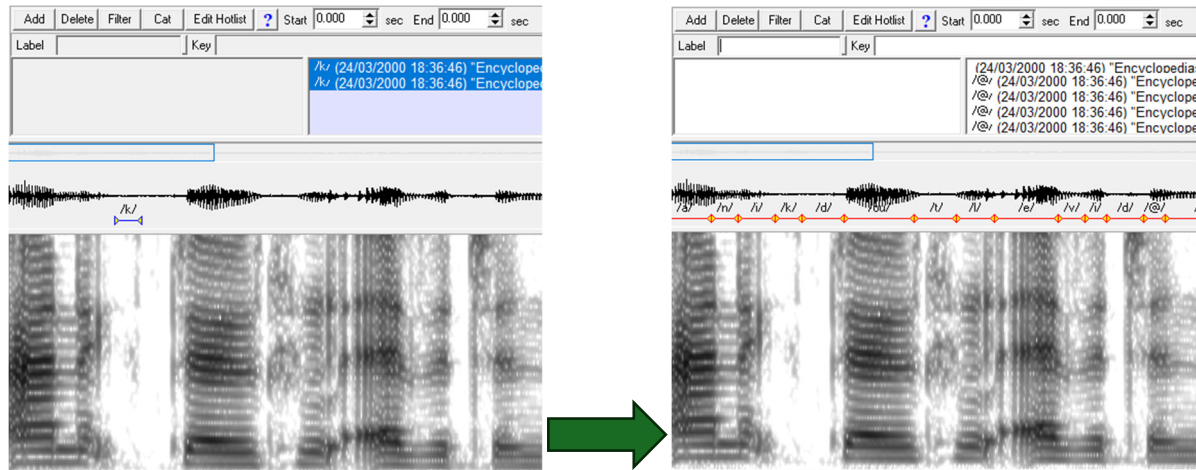
☐ Sort on Prompt

OK Cancel Load Save

Figure 5 Annotation filter Sort tab options

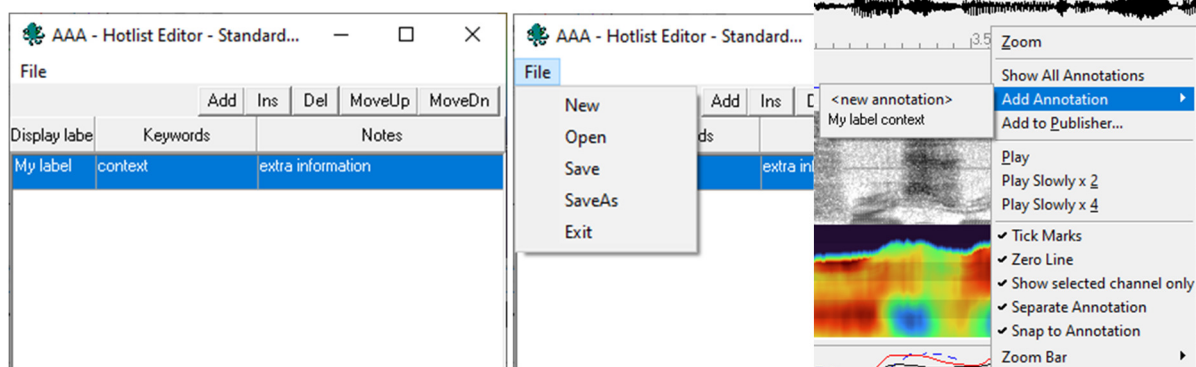
Sort defaults to listing in order of the time the recording was made but other ordering is possible and the options can be selected in the sort tab.

Note: When you add an annotation to the current recording the annotation filter settings are automatically changed to “current recording” “current client” and “all annotations”. If we don’t do this then there is a risk that users add an annotation and because of the filter setting that newly added annotation does not appear in the wave subwindow and may cause the mistaken belief that the annotation process is not working. Filtered annotations have a blue background in the annotation list box. Unfiltered annotations have a white background in the annotation list box. The annotations in the waveform windows are red and yellow if unfiltered and blue if filtered.



Cat - This option was designed to take the filtered annotations and concatenate them together in a single recording so that they could be played together. That concatenated recording could be played back to hear all the annotations in quick succession. It should concatenate the EPG stream but has not been updated for years and may not concatenate the ultrasound or video streams.

Edit Hotlist - A hotlist is a table of pre-prepared annotations with label keywords and notes fields already completed. If the same details will be added to many annotations then this hotlist will save time. The button opens a dialog where these fields can be entered.



Once the hotlist is complete it can be saved from the file menu. Then it appears in the wave display right-click popup menu under add annotation